

CARATTERISTICHE TECNICHE:

- LAVORAZIONE: ACCIAIO INOX STAMPATO
- CORPO E PARTI METALLICHE IN ACCIAIO INOX Aisi 304 o Aisi 316
- TENUTA: NBR, FPM o PTFE *
- CONNESSIONI FILETTATE FEMMINA UNI ISO 228
- SALDATURE: A TIG SENZA APPORTO DI MATERIALE
- PRESSIONE DI APERTURA: MIN. 0,025 BAR MAX. 0,035 BAR
- TEST IDRAULICO: ARIA COMPRESSA A 0,2 BAR SU OGNI VALVOLA
- PRESSIONE NOMINALE DI ESERCIZIO: 16 BAR
- TEMPERATURA DI ESERCIZIO: -25°C - +90°C (CON GUARNIZIONE NBR)
-20°C - +150°C (CON GUARNIZIONE FPM)
-20°C - +200°C (CON GUARNIZIONE PTFE*)
* TEFLON-FEP® CON ANIMA IN SILICONE



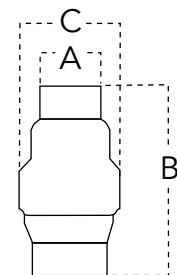
TECHNICAL FEATURES:

- MANUFACTURING PROCESS: PRESSED STAINLESS STEEL
- BODY VALVE AND METALLIC PARTS IN STAINLESS STEEL Aisi 304 OR Aisi 316
- SEAL RING: NBR, FPM OR PTFE*
- THREADED ENDS: UNI ISO 228 FEMALE
- WELDED JOINTS: MADE WITH TIG METHOD WITHOUT ANY ADDITIONAL MATERIAL
- OPENING PRESSURE: MIN. 0,025 BAR MAX. 0,035 BAR
- HYDRAULIC TEST: COMPRESSED AIR AT 0,2 BAR ON EACH VALVE
- NOMINAL WORKING PRESSURE: 16 BAR
- WORKING TEMPERATURE: -25°C - +90°C (WITH NBR SEAL)
-20°C - +150°C (WITH FPM SEAL)
-20°C - +200°C (WITH PTFE* SEAL)
* SILICON RING WITH A TEFLON-FEP®

DIMENSIONI E PESI

DIMENSIONS AND WEIGHTS

Misura Size	DN	Dimensioni in mm Dimensions in mm			Peso in gr Weight in gr	Pezzi per scatola Carton quantity
		A	B	C		
3/4"	20	29	70	44	129	8
1"	25	36	84	53	191	8
1"1/4	32	45	99	62	281	6
1"1/2	40	51	119	78	388	6
2"	50	64	123	89	704	4
2"1/2	65	80	147	113	1425	1
3"	80	93	166	132	2085	1
4"	100	120	193	167	3415	1



CARATTERISTICHE COSTRUTTIVE CONSTRUCTION FEATURES

Componenti Components	Versione Aisi 304 Version Aisi 304	Versione Aisi 316 Version Aisi 316
1 Manicotto lato mandata • Outlet end	1.4301 • 1.4304 EN 10088	1.4401 • 1.4404 EN 10088
2 Corpo valvola • Valve body	1.4301 • 1.4304 EN 10088	1.4401 • 1.4404 EN 10088
4 Boccola di guida • Guide bush	PTFE	PTFE
4 Guida otturatore • Flow control disk guide	1.4301 • 1.4304 EN 10088	1.4401 • 1.4404 EN 10088
5 Manicotto lato aspirazione • Inlet end	1.4301 • 1.4304 EN 10088	1.4401 • 1.4404 EN 10088
6 Molla • Spring	1.4301 • 1.4304 EN 10088	1.4401 • 1.4404 EN 10088
7 Otturatore • Flow control disk	1.4301 • 1.4304 EN 10088	1.4401 • 1.4404 EN 10088
8 Contenitore anello di tenuta • Seal ring housing	1.4301 • 1.4304 EN 10088	1.4401 • 1.4404 EN 10088
9 Anello di tenuta • Seal ring	NBR, FPM, PTFE*	FPM, PTFE*
10 Anello ferma tenuta • Seal ring retainer	1.4301 • 1.4304 EN 10088	1.4401 • 1.4404 EN 10088
11 Supporto contenitore tenuta • Seal ring support	1.4301 • 1.4304 EN 10088	1.4401 • 1.4404 EN 10088
12 Guida lato aspirazione • Outlet side guide	1.4301 • 1.4304 EN 10088	1.4401 • 1.4404 EN 10088

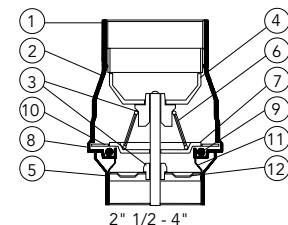
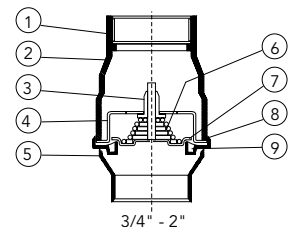
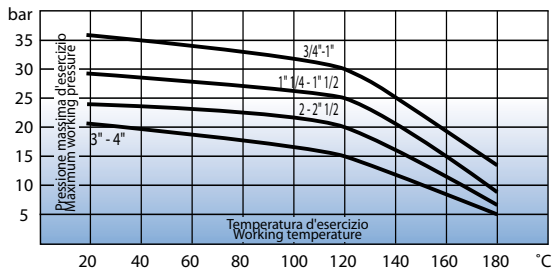
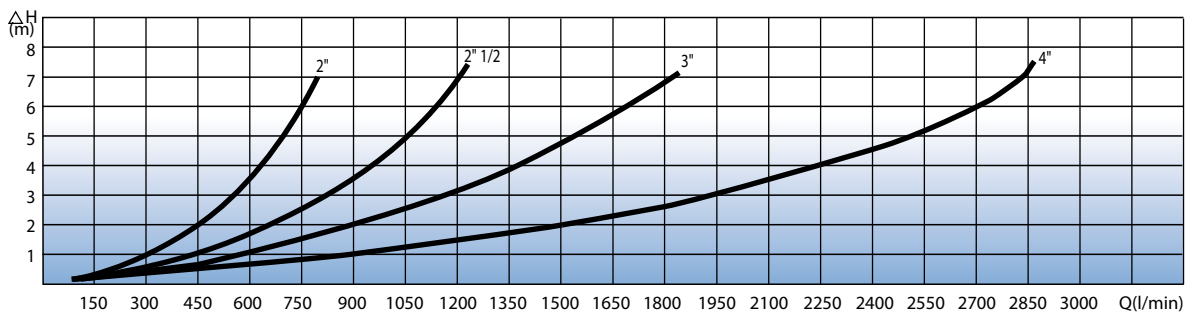
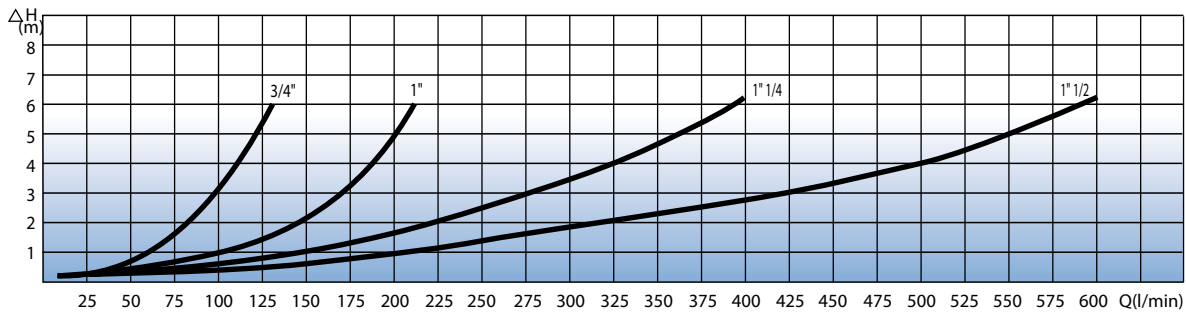


DIAGRAMMA PRESSIONE-TEMPERATURA PRESSURE-TEMPERATURE DIAGRAM



DIAGRAMMI PERDITE DI CARICO FRICTION LOSSES DIAGRAMS



Versioni speciali • Special models

CON OTTURATORE RINFORZATO WITH REINFORCED PIN

PER UTILIZZO CON GAS O VAPORE

- CORPO E PARTI METALLICHE: IN ACCIAIO INOX AISI 304
- TENUTA: FPM
- OTTURATORE: ACCIAIO INOSSIDABILE AISI 316
CON SALDATURA RINFORZATA TRA PERNO E DISCO
- MISURE DISPONIBILI: DA 3/4" A 1"1/2"

FOR USE WITH GAS OR STEAM

- BODY VALVE AND METALLIC PARTS IN STAINLESS STEEL AISI 304
- SEAL RING: FPM
- FLOW CONTROL DISC: STAINLESS STEEL AISI 316
WITH REINFORCED WELDING BETWEEN GUIDING PIN AND DISC
- AVAILABLE SIZES: FROM 3/4" TO 1"1/2"



**CONFORME A UNI EN 1074-3
IN CONFORMITY WITH UNI EN 1074-3**

PER ACQUA POTABILE

- CORPO E PARTI METALLICHE: IN ACCIAIO INOX AISI 304
- TENUTA: EPDM CON APPROVAZIONE WRAS O EQUIVALENTE
- TEMPERATURA DI ESERCIZIO: -20°C - +110°C
- MISURE DISPONIBILI: DA 3/4" A 4"

FOR DRINKABLE WATER

- BODY VALVE AND METALLIC PARTS IN STAINLESS STEEL AISI 304
- SEAL RING: EPDM WITH WRAS OR EQUIVALENT APPROVAL
- WORKING TEMPERATURE: : -20°C - +110°C
- AVAILABLE SIZES: FROM 3/4" TO 4"



**CONFORME A UNI EN 1717 (TIPO EA)
IN CONFORMITY WITH UNI EN 1717 (TYPE EA)**

VERSIONE ANTINQUINAMENTO CONTROLLABILE

- CORPO E PARTI METALLICHE: IN ACCIAIO INOX AISI 304
- TENUTA: FPM
- FORO DI ISPEZIONE: FILETTATO 1/8" GAS MASCHIO SU LATO ASPIRAZIONE
- MISURE DISPONIBILI: DA 3/4" A 2"

ANTIPOLLUTION CHECKABLE VERSION

- BODY VALVE AND METALLIC PARTS IN STAINLESS STEEL AISI 304
- SEAL RING: FPM
- INSPECTION HOLE: THREADED 1/8" MALE ON SUCTION SIDE
- AVAILABLE SIZES: FROM 3/4" TO 2"



**MASCHIO – FEMMINA
MALE - FEMALE**

- CORPO E PARTI METALLICHE: IN ACCIAIO INOX AISI 304
- TENUTA: FPM
- CONNESSIONE LATO ASPIRAZIONE: FILETTATA: MASCHIO UNI ISO 228
- CONNESSIONE LATO MANDATA: FILETTATA FEMMINA UNI ISO 228
- MISURE DISPONIBILI: DA 1" A 2"

- BODY VALVE AND METALLIC PARTS IN STAINLESS STEEL AISI 304
- SEAL RING: FPM
- THREADED ENDS ON SUCTION SIDE: UNI ISO 228 MALE
- THREADED ENDS ON DELIVERY SIDE: UNI ISO 228 FEMALE
- AVAILABLE SIZES: FROM 1" TO 2"



**CON FILETTATURA NPT
WITH NPT THREADS**

- CORPO E PARTI METALLICHE: IN ACCIAIO INOX AISI 304
- TENUTA: FPM
- CONNESSIONI FILETTATE: GAS CONICHE NPT SECONDO ANSI B 1.20.1
- MISURE DISPONIBILI: DA 3/4" A 2"

- BODY VALVE AND METALLIC PARTS IN STAINLESS STEEL AISI 304
- SEAL RING: FPM
- THREADED ENDS: NPT ACCORDING TO ANSI B 1.20.1
- AVAILABLE SIZES: FROM 3/4" TO 2"



FEMMINA – MASCHIO CON ATTACCO ALIMENTATORE
FEMALE – MALE WITH CONNECTION FOR AIR FEEDER

- CORPO E PARTI METALLICHE: IN ACCIAIO INOX AISI 304
 - TENUTA: NBR
 - ATTACCO ALIMENTATORE: FILETTATO 3/8" GAS FEMMINA SU LATO ASPIRAZIONE
 - MISURE DISPONIBILI: DA 1" A 2"
- BODY VALVE AND METALLIC PARTS IN STAINLESS STEEL AISI 304
 - SEAL RING: NBR
 - CONNECTION FOR AIR FEEDER: THREADED 3/8" FEMALE ON SUCTION SIDE
 - AVAILABLE SIZES: FROM 1" TO 2"

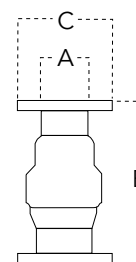


FLANGIATA
FLANGED

- CORPO E PARTI METALLICHE: IN ACCIAIO INOX AISI 304 O AISI 316
 - TENUTA: FPM
 - CONNESSIONI FLANGIATE: FLANGE IN ACCIAIO INOX STAMPATO CON FORATURA SECONDO UNI 2278 PN 16
 - MISURE DISPONIBILI: DA DN 50 A DN 100
- BODY VALVE AND METALLIC PARTS IN STAINLESS STEEL AISI 304 OR AISI 316
 - SEAL RING: FPM
 - FLANGED ENDS: FLANGES FABRICATED FROM PRESSED STAINLESS STEEL WITH HOLES ACCORDING TO UNI 2278 PN 16
 - AVAILABLE SIZES: FROM DN 50 TO DN 100



Misura Size	Dimensioni in mm Dimensions in mm			Peso in gr. Weight in gr.
	A	B	C	
DN 50	64	123	165	1950
DN 65	80	143	185	3245
DN 80	93	164	200	4135
DN 100	120	194	225	6685



VERSIONI FORNIBILI SU RICHIESTA • MODELS AVAILABLE ON REQUEST

Tipo di guarnizione Type of seal	3/4"	1"	1"1/4	1"1/2	2"
FFKM	X	X	X	X	X
FEP	X	X	X	X	X

N.B. PER VERSIONI PERSONALIZZATE, CONTATTARE IL NOSTRO UFFICIO COMMERCIALE
 FOR PERSONALIZED MODELS, CONTACT OUR SALES DEPT.