



SERIES 07

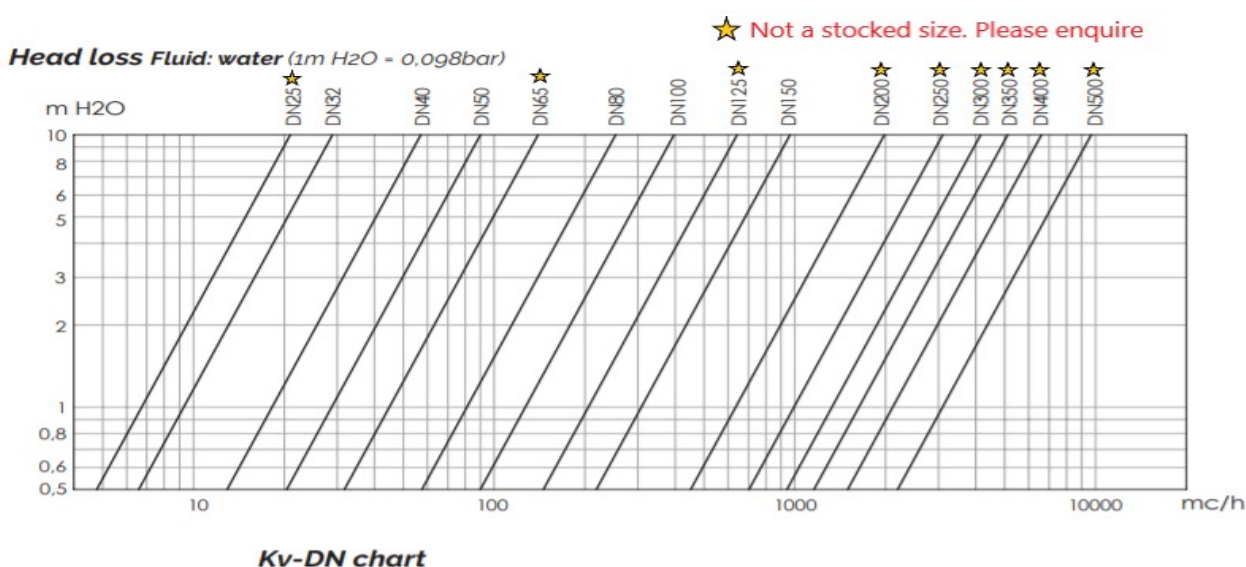
- For heavy, thick and viscous fluids and dirty water.
- Minimal pressure drop.
- Full passage.
- Self cleaning.
- Horizontal & vertical installation.



The series 07 valves are ball check valves made of ductile iron with NBR coated ball and seals and S/S bolts. Available in DN32, 40, 50 and 80 threaded and DN80, 100 and 150 flanged. Maximum pressure 16 bar, temperature rating -10 to 70 deg C.

Full bore, low head losses, self cleaning. Removable bonnet for cleaning or repair without removing the valve from the pipeline.

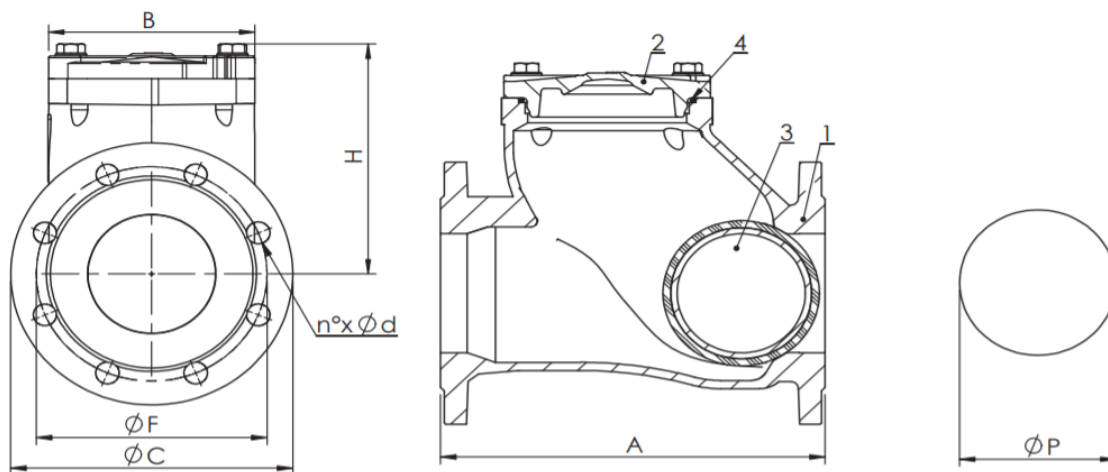
Suitable for installing in a vertical (recommended) and horizontal position.



DN	25	32	40	50	65	80	100	125	150	200	250	300	350	400	500
Kv	21	29	57	90	140	253	396	642	962	1'990	3'100	4'150	5'100	6'600	9'700

Certifications



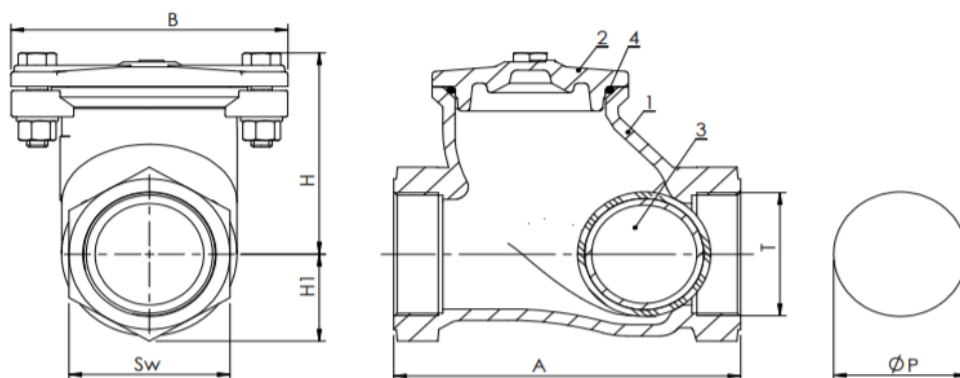


Dimensions (mm)

DN		80	100	150
A F7	EN 558/1 - 48°	260	300	400
H		155	193	249
B		135	161	240
C		200	220	285
F		160	180	240
Flange/Flanges	EN 1092/2	PN10/16	PN10/16	PN10/16
n° x d		8 x 18	8 x 18	8 x 22
P		96	122	180

Weight (kg)

F7		16,3	22,3	48,4
----	--	------	------	------



Dimensions (mm)

DN		32	40	50	80
A 1 T7	non unificato/not standardized	135	138	166	236
H		80	84	103	155
H1		32	36	42	67
B		107	109	128	135
T	ISO 228-1	1 1/4	1 1/2	2"	3"
Sw		55	62	73	115
P		58	51	62,5	96

Weight (kg)

T7		1,8	2,1	3,4	10,7
----	--	-----	-----	-----	------