

Elettropompe sommergibili SEMISOM /80 per acque luride

Electric submersible pumps SEMISOM /80 for sewage water



Caratteristiche tecniche 2 poli 50 Hz • Performance characteristics 2 poles 50 Hz

Trifase Three-Phase 400 V 50 Hz	P2 HP	P1 KW	A max	Cavo Cable m	DNM	Passaggio solidi Ø Solids passage	P o r t a t a • F l o w															
							m³/h	0	15	30	45	60	72	78	90	96	108	123	135	150	165	
							l/min	0	250	500	750	1000	1200	1300	1500	1600	1800	2050	2250	2500	2750	
							Prevalenza manometrica totale in metri • Total manometric head in meters															
Girante Arretrata • Vortex Impeller																						
SEMISOM 1555/80 T	5,5	4	5,34	9,15	10	80	74	14	13,5	12,6	11,1	8,2	6,3	5,5	4							
SEMISOM 1255/80 T	5,5	4	5,31	9,1	10	80	74	15,5	14,6	13,7	12,4	9,7	7,7									
SEMISOM 1055/80 T	5,5	4	5,41	9,2	10	80	74	17	16,4	15,5	14,1	11,4										
SEMISOM 1775/80 T	7,5	5,5	6,8	11,9	10	80	74	17	16,4	15,5	14,1	11,4	9,1	8,1	6,5	5,7	4,4					
SEMISOM 1675/80 T	7,5	5,5	7	12	10	80	74	19	18,2	17,2	16	13,7	11,1	9,9	8,1	7,4						
SEMISOM 1375/80 T	7,5	5,5	6,8	11,9	10	80	74	21	20	18,5	17,2	15	12,7	11,6								
SEMISOM 2100/80 T	10	7,5	9	16,2	10	80	74	21	20	18,5	17,2	15	12,7	11,6	9,6	8,7	6,7	4				
SEMISOM 1600/80 T	10	7,5	9	16,2	10	80	74	24	23	21,7	20,3	18,3	16,1	14,9	12,6							
SEMISOM 1200/80 T	10	7,5	9,1	16,4	10	80	74	27	25,4	23,8	22,4	20,4	18									
Girante Bicanale • Double-Channel Impeller																						
SEMISOM 2700/80 T	11	8	10,4	18	10	80	45x62															

Caratteristiche tecniche 4 poli 50 Hz • Performance characteristics 4 poles 50 Hz

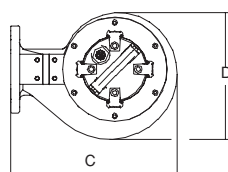
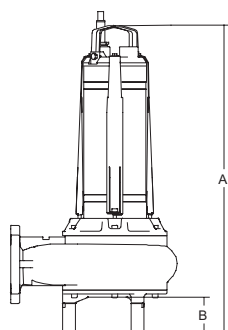
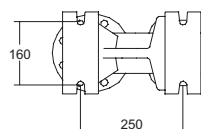
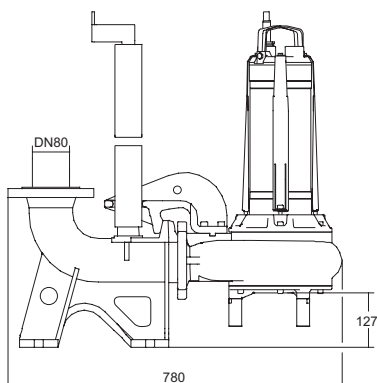
Trifase Three-Phase 400 V 50 Hz	P2 HP	P1 KW	A max	Cavo Cable m	DNM	Passaggio solidi Ø Solids passage	P o r t a t a • F l o w												
							m³/h	0	12	24	30	36	48	60	66	72	78	84	90
							l/min	0	200	400	500	600	800	1000	1100	1200	1300	1400	1500
							Prevalenza manometrica totale in metri • Total manometric head in meters												
Girante Arretrata • Vortex Impeller																			
SEMISOM 1504/80 T	3,5	2,6	3,64	8,15	10	80	74	9,7	9,3	8,8	8,6	8,3	7,6	6,8	6,3	5,8	5,4	4,9	4,4

P1: Potenza massima assorbita dalla rete • P1: Max absorbed power from mains

P2: Potenza nominale del motore • P2: Rated power of the motor

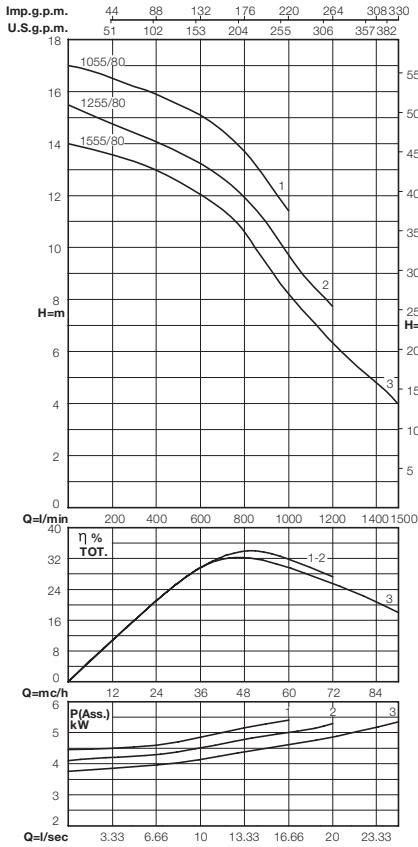
A richiesta, dispositivo di discesa ed ancoraggio • Available, on request, descent and anchorage device

A richiesta, flangia filettata UNI2204 per bocca di mandata • Available, on request, UNI2204 threaded flange for outlet

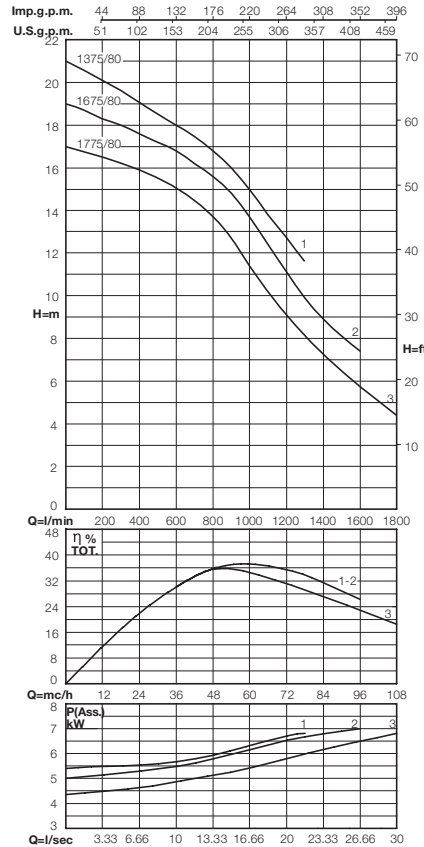


Tipo Type		Misure mm Dimensions mm				Peso Weight Kg
		A	B	C	D	
Semisom 1555/80 T		703	78	383	295	63,3
Semisom 1255/80 T		703	78	383	295	63,3
Semisom 1055/80 T		703	78	383	295	63,3
Semisom 1775/80 T		733	78	383	295	66,5
Semisom 1675/80 T		733	78	383	295	66,5
Semisom 1375/80 T		733	78	383	295	66,5
Semisom 2100/80 T		758	78	383	295	69,5
Semisom 1600/80 T		758	78	383	295	69,5
Semisom 1200/80 T		758	78	383	295	69,5
Semisom 2700/80 T		758	78	383	295	71,0
Semisom 1504/80 T		758	78	383	295	70,0

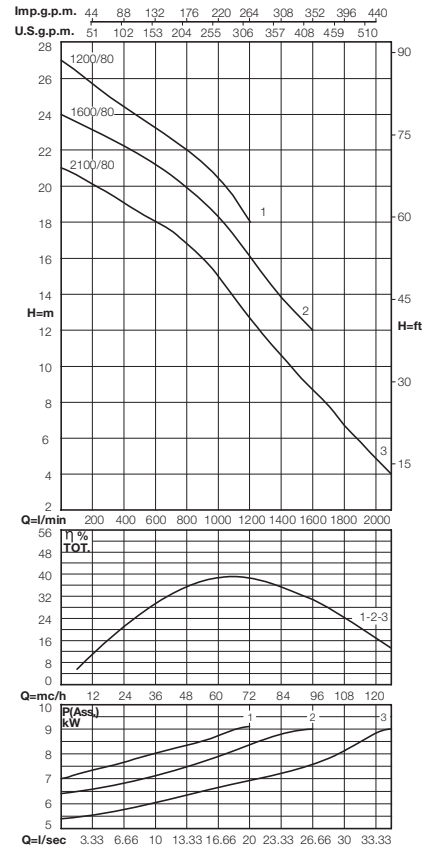
Semisom 1555/80 - 1255/80 - 1055/80



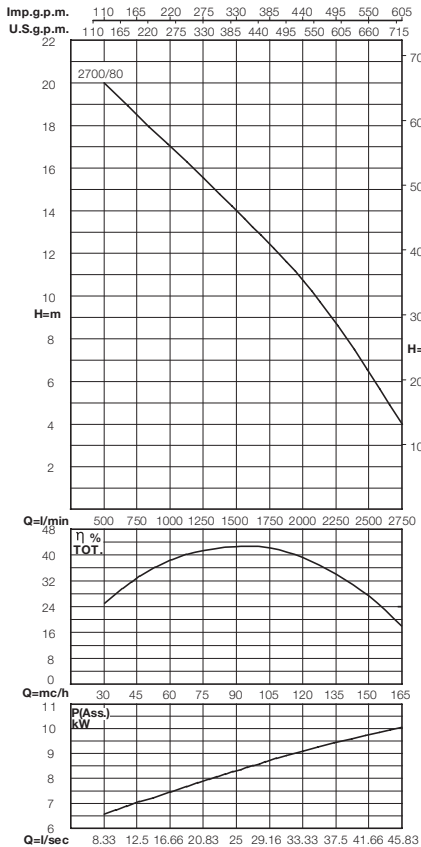
Semisom 1775/80 - 1675/80 - 1375/80



Semisom 2100/80 - 1600/80 - 1200/80



Semisom 2700/80



Semisom 1504/80

